

25,00 m



14,00 m



260 kg

-5,00 m



230 kg



90°+90°



23,00 m



720°



ELECTRONIC
+ RADIO



12,00 m

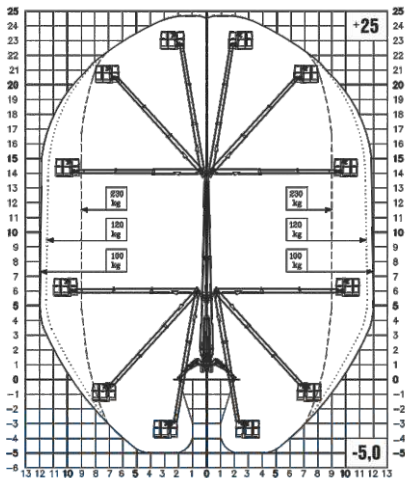


ALUMINIUM
0,7X0,7X1,1
1,4X0,7X1,1
1,8X0,7X1,1

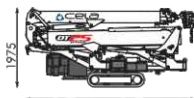


2,95 T

DT25
SPYDER



800



4315

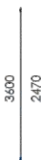


1150



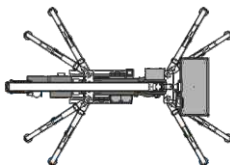
4815

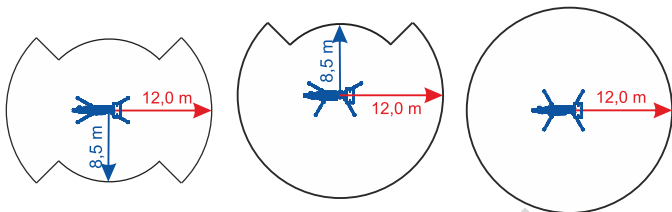
3650



3600

2470





CELA
industry

Passiamo sopra ogni cosa
We fly all over



**14 mts up and
12 mts over:
never so high**

Sottosopra
Downunder



-5.0 m

Tutto in uno
All in one



30°

Altteriamo ovunque
We land everywhere



Come un ascensore
Like an elevator



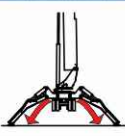
14,0 m

**Comandi a controllo elettronico,
nuove qualità operative**
Electronic control, real system responses



14,0 m

Auto Stabilizzazione
Automatic Stabilization



14,0 m

Siamo i più forti
We are the strongest



230 kg

260 kg

Portata Ulisse - Capacity

Non li facciamo girare la testa
We don't drive (your head) crazy



90° + 90°

Sempre al tuo fianco
Always with you



14,0 m

Bini

Bini Group di Bini Roberto

Sede Legale: Via Alba Marina, 12 - 00151 Genova (Aquila) (BO) - Italy
Sede Operativa: Via 20 Settembre, 7/C - 00157 Cagliari (CA) - Italy
P.iva 02022611205 - C.F. 020917110054140 - REA 307332
Tel. +39 02 51 087201 - Mail: info@bini.com
www.bini.com info@bini.com