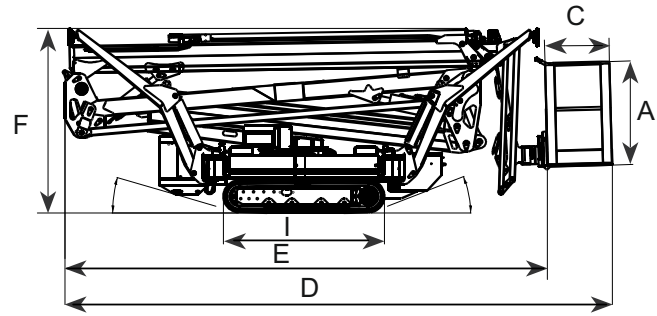
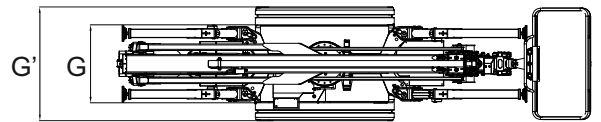


| PERFORMANCE | |
|-------------------------------|--------------|
| WORKING HEIGHT | 23.50 m |
| HORIZONTAL OUTREACH (230 KG.) | 12.00 m |
| UP AND OVER CLEARANCE | 11.00 m |
| CAGE CAPACITY | 230 Kg |
| MOVABLE JIB | 90° |
| CAGE ROTATION | 160° |
| TURRET ROTATION | 440° |
| GRADEABILITY | 30% |
| SLOPE ANGLE (α) | 21° - 16° |
| TRAVEL SPEED | 1.0-2.0 Km/h |

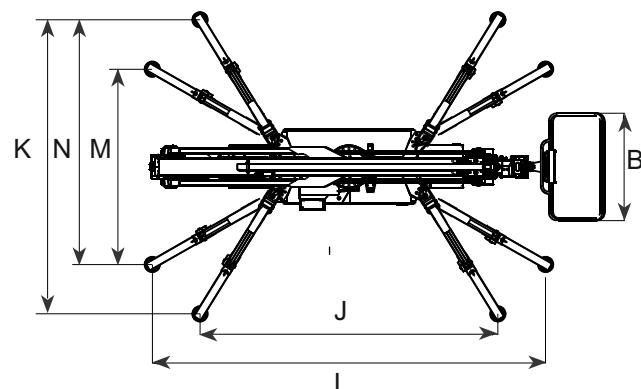


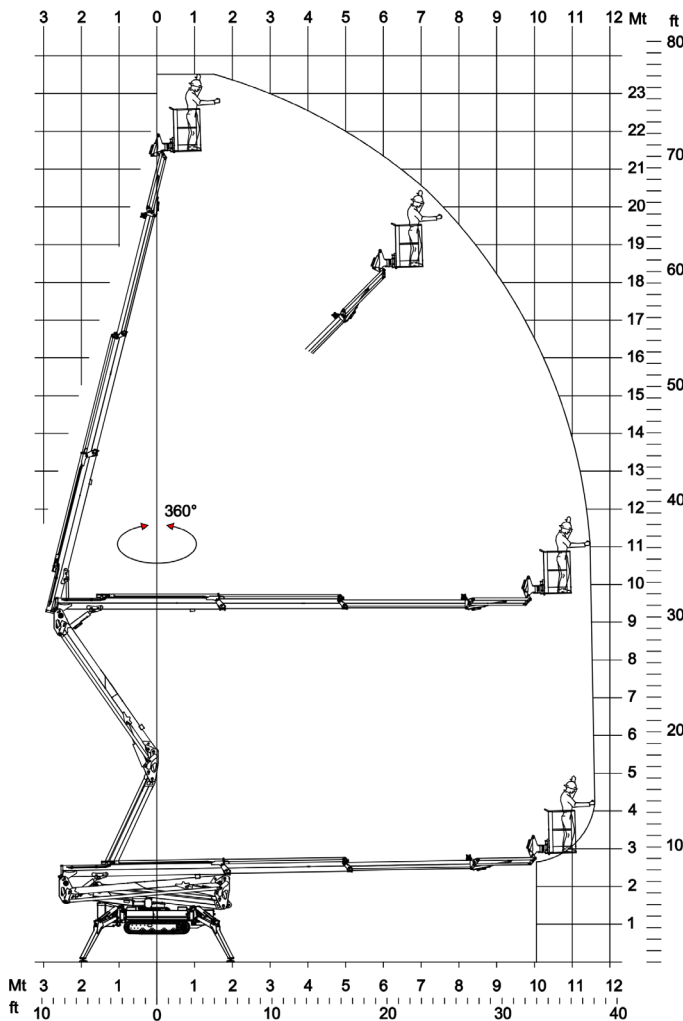
| MEASURES | |
|----------------------------------|---------------|
| CAGE HEIGHT (A) | 1.10 m |
| CAGE LENGTH (B) | 1.40 m |
| CAGE WIDTH (C) | 0.70 m |
| LENGTH (D) | 5.90 m |
| LENGTH WITHOUT CAGE (E) | 5.20 m |
| HEIGHT (TRAVELLING POSITION) (F) | 2.00 m |
| WIDTH, MIN (G) | 0.99 m |
| WIDTH, MAX (G') | 1.44 m |
| GROUND CLEARANCE (H) | 0.20 m |
| TRACK (L x W) (I) | 1.75 x 0.23 m |
| LENGTH OUTRIGGER STANDARD (J) | 3.90 m |
| WIDTH OUTRIGGER STANDARD (K) | 3.80 m |
| LENGTH OUTRIGGER NARROW (L) | 5.10 m |
| WIDTH OUTRIGGER NARROW (M) | 2.50 m |
| WIDTH OUTRIGGER MEDIUM (N) | 3.20 m |
| OUTRIGGER PLATE (\emptyset) | 0.20 m |



| WEIGHT | |
|-------------------------------|------------------------|
| TOTAL WEIGHT | 3250 Kg |
| TRAVEL CONFIGURATION PRESSURE | 3.50 kN/m ² |
| WORK CONFIGURATION PRESSURE | 1.95 kN/m ² |
| MAX OUTRIGGER FORCE | 20.6 kN |

| POWER SOURCES | |
|----------------------------------|-------------------|
| STANDARD Diesel Engine | 12.5 kW |
| STANDARD Electric Motor | 110/230V - 2.3 kW |
| OPTIONAL Lithium Battery | 48V - 100 Ah |
| FUEL TANK CAPACITY Diesel Engine | 16 l |
| OIL TANK CAPACITY | 50 l |





CHASSIS

- Powerful track drive with hydraulic braking system
- Precise manoeuvring over sensitive radio control
- Rubber tracks with specially arranged profile providing optimum grip

STABILISATION

- Variable outrigger system with one side or both sides narrow or wide setup option

BOOM SYSTEM

- Double pantograph
- Telescopic upper booms
- Articulated Jib 90°
- Turnable basket 160°
- Electric proportional and radio controls
- Hydraulic cage self levelling system
- Turret rotation with slewing ring

POWER SOURCES

- 110V (US) / 230V (EU) electric motor
- 12.5 kW Kubota diesel engine with electronically regulated engine control
- Start/ Stop device for the engine in the cage

PRODUCTIVITY, SAFETY & QUALITY

- 110V (US) / 230V (EU) power socket in the cage
- High quality paint in RAL 9003 & RAL 2001
- Hand pump for emergency lowering
- Cables and hoses safely routed through the boom structure
- Lock valves on hydraulic cylinders
- Relief valves protecting the hydraulic system from too high pressures
- Protective covers for all components
- Hour meter

OPTIONS

- Battery drive (lithium) 48V 100 Ah (RA24HY)
- Outrigger self levelling system
- Outrigger pads
- Non marking rubber tracks
- Custom paintwork



Bini Gru srl

Sede Legale Via Aldo Moro, 62 40050 Castello d'Argile (BO) - Italy

Sede Operativa: Via XX Settembre, 7/C 40057 Cadriano (BO) - Italy

P.Iva/C.F. 04227001205 - REA 577968

Tel. +39 (0) 51 0827261 - Mob. +39 348 7614707

www.binigrug.it

info@binigrug.it